



Cricklade, Purton and Royal Wootton Bassett Community Policing Team Update



Hello and welcome to this Community Policing Team report.

The purpose of these reports is to provide a short summary of the local issues in your area. Engaging with the public is vital for us as. Not only does it give us an opportunity to share what we are doing and keep our communities informed and up to date but it also provides an opportunity for our communities to feed back to us; what we're doing well, where we can make improvements and how we can work together to tackle local issues.

We hope you find these updates useful, for the latest news, crime prevention advice and appeals please follow us on:

Twitter <https://twitter.com/wiltshirepolice>

Facebook <https://www.facebook.com/wiltshirepolice/>

Or sign up to Community Messaging <https://www.wiltsmessaging.co.uk/>

Thank you for your continued support to Wiltshire Police.

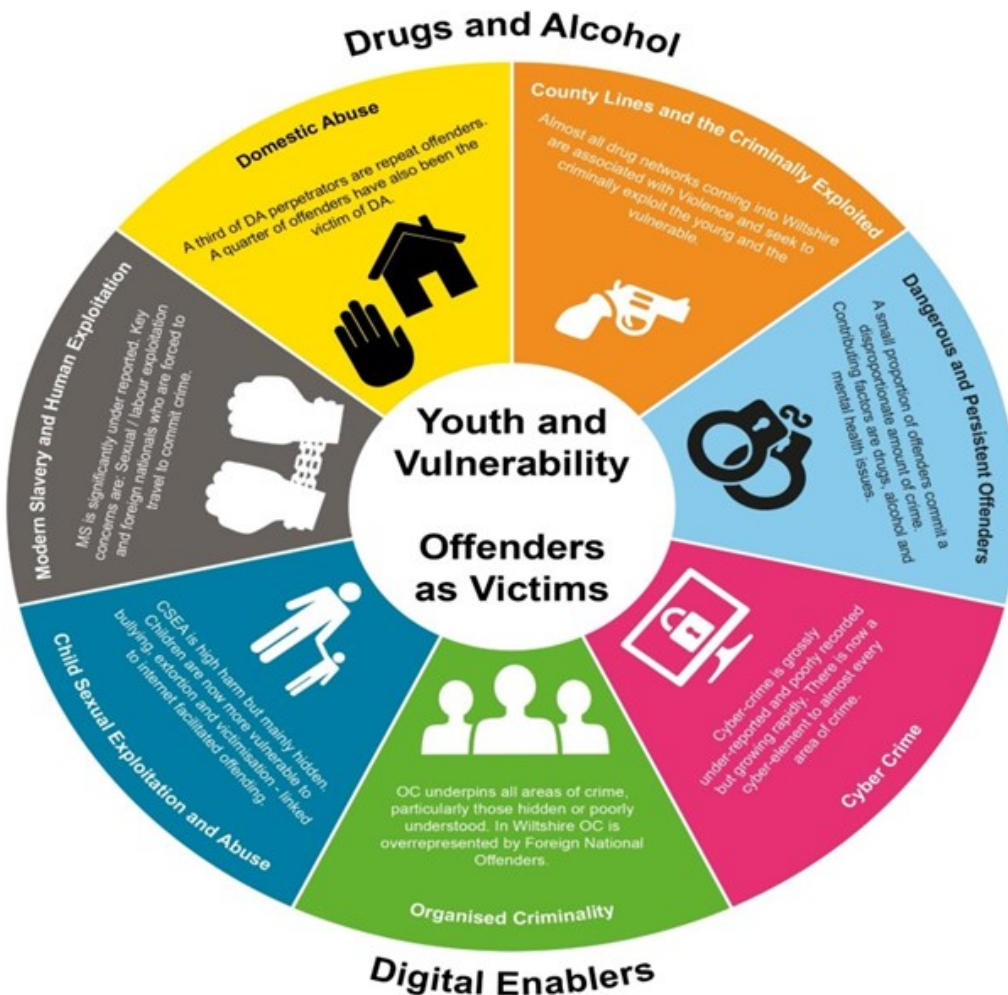
Crimes that have an impact on the community reported between 1st January 2018 and 3rd March 2018

- ◇ Between the 5th January and the 8th January unknown Suspect(s) have climbed a 6ft fence and broken the locks to a premises on the High street, Cricklade and stolen various items from within.
- ◇ Between the 13th and 14th January unknown Suspect(s) have gained access to a stable at Greenhill Lane and stolen tools to the value of £4000.
- ◇ Between 22:00 on 19th January and 08:00 on 20th January unknown Suspect(s) have entered a secure garage at Pavenhill, Purton and stolen Chainsaws to the value of £15,000.
- ◇ Between 20:00 on the 19th January and 09:00 on the 20th January unknown Suspect(s) have broken in to a shed at an address on Collins Lane, Purton and stolen various tools from inside.
- ◇ Between 16:00 on the 21st January and 09:30 on 22nd January unknown Suspect(s) have entered a container on Wood Lane, Braydon and stolen a number of tools and chainsaws from within.
- ◇ Between 16:00 on the 26th January and 11:00 on the 28th January unknown Suspect(s) have forced entry to a storage shed at a Farm in Broadtown and stolen a Quad Bike and a petrol chain saw.
- ◇ At 21:00 on the 28th January a robbery occurred at the Esso Garage in Wootton Bassett, the suspect threatened the victim with a hammer and stole £100 from the till.
- ◇ On 29th January between 17:20 and 17:30 unknown Suspects have forced entry to a property on Linden Way, Swindon by smashing the rear patio window and stolen a safe containing £400.
- ◇ On the 29th January between 20:00 and 21:40 unknown Suspects have forced entry to a property on Byron Avenue, Royal Wootton Bassett by smashing the rear window although no property was taken.
- ◇ Between 17:30 on the 29th January and 09:00 on the 30th January unknown Suspect(s) forced entry to a property on Longleaze, Royal Wootton Bassett and have stolen a number of tools.
- ◇ Between 16:00 on 29th January and 13:30 on 30th January unknown suspects have forced entry to a property in Gainsborough Avenue and stolen a number of items from within.
- ◇ Between 9th and 16th February unknown suspects have forced entry in to a shed at an address at The Street, Brinkworth although nothing was stolen.
- ◇ Between 16:00 on the 14th February and 07:00 on the 15th February unknown suspect(s) have forced entry to a building site in Purton and stolen the door to a digger.
- ◇ Between 19:15 on the 14th February and 07:15 on the 15th February unknown suspect(s) have forced entry to a shed at an address in St Peters Church, Clyffe Pypard and stolen a number of items including a bathroom suite and bicycles.
- ◇ Between 17:00 on the 14th February and 09:00 on the 15th February unknown suspect(s) have forced entry to a garage at an address on Wood Street, Clyffe Pypard and stolen a strimmer and a hedge trimmer.
- ◇ Between the 15th and 16th February unknown suspect(s) have entered a number of commercial properties in the high street, Cricklade and stolen various items include cash and charity boxes.
- ◇ At approximately 01:00 on the 17th February unknown suspect(s) have forced entry to a commercial property on Church end, Purton however nothing was stolen.

CONTROL STRATEGY

Below is our control strategy for your reference. This focuses on where how we conduct our operational Policing based on the Police & Crime Plan. We will continue to align our resources with the threat/harm/risks presented in line with the control strategy.

Domestic abuse, Cyber Crime, Organised criminality, County lines and the criminally exploited, Dangerous and persistent offenders, Child sexual exploitation and abuse, Modern slavery and human exploitation.



Volunteers Wanted

Our volunteers help us do more by increasing our numbers and creating closer and more effective relationships with our communities. We are currently recruiting Police Vehicle Cleaning and Inventory volunteers to work across the Force within our Community Policing Teams.

For an application form and volunteer role description please visit the Wiltshire Police Website and you will find a volunteers section under the support Tab.



Thank You

Thursday the 1st March saw some of the worst weather conditions Wiltshire has seen in a number of years which continued in to the weekend. Whilst officers worked tirelessly to keep up with the policing demand a number of other agencies and members of the public also assisted, this a thank you to all those that helped during this period.





The link below is for Community Messaging. The Community Coordinator for this area sends out a daily message, if there has been any crime that will benefit the community to be aware of. This includes thefts, scams and burglaries, the aim is to inform you of what is happening in your area, help you take any actions to avoid becoming a victim of crime and to alert you as a potential witness to any crime. Its easy to sign up and only messages, relevant to your area, are sent to your email inbox.

<https://www.wiltsmessaging.co.uk/>

The email address for the Wiltshire North Community Policing team is
northwiltshirecpt@wiltshire.police.uk
Please phone 101, or 999 in an emergency to report any incidents or
crimes

This report has been prepared by PC 2608 Stuart Welch

